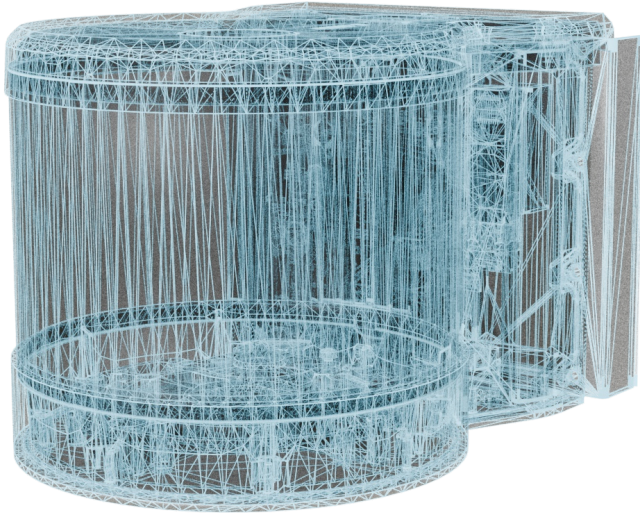


The agile, compact and high bandwidth solution to wireless communications.

---



Cost effective and easy installation.

270 degrees pan and +/- 20 degrees tilt.

No interference issues.

200 meter single mode fiber bridging.

License free.

Eye Safe.

Active tracking.

Automatic alignment.

# Specifications

# TRANSOPTO

**Range:** 200 Meters

**Data Rate:** 1G, 10G, 800G\*

**Data Interface:** SFP, SFP+, SM Fiber (800G)

**Wavelength:** 1300nm, 1550nm

**Alignment:** Motorized, Automatic. No adjustment needed on site.

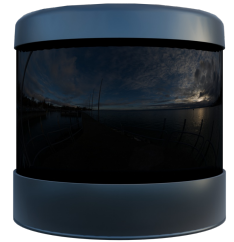
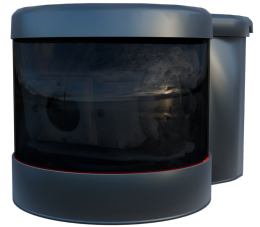
**Tracking:** Automatic.

**Power:** PoE, <7W

**Managment:** Out of band, built-in web-server.

**Dimensions:** 180mm x 150mm x 130mm.

**Weight:** 1KG



Rendered Visualization

\*The 800G link is a transparent single mode bridge. It requires customer-side equipment with at least 25 dB power budget.

## Contact Information

Transopto.com

Info@Transopto.com

Stemmane 6, 4636 Kristiansand